



**2015**

**Zebra Child  
Protection Centre  
Annual Report**



**“This made me think I was in a place like heaven.”**

- Zebra Child

On behalf of the entire Zebra Child Protection Centre staff and Board of Directors, we are pleased to present our 2015 annual report - our 14th year of collaboratively responding to cases of abuse against children.

In 2015, construction began on what will become our new facility. Gaining an additional 1,000 square feet of space, our move will allow us to accommodate the increased demand for our services and growth in the programs we offer. This year, we met increasing numbers with an expanded network of support, including growing our Trauma Referral Program to ensure everyone is given access to mental health services. Further, we grew our team to include three additional child support services positions. In the fall, we welcomed our third accredited support dog, Fletcher, to the Centre to assist in preparing children for court and alleviating their anxiety on the stand.

From the moment a child is referred to the Zebra Child Protection Centre, our role is to listen to, believe, support and heal the child using the collective wisdom of our multidisciplinary team. For more than a decade, our model of collaboration has been expanding to include more partners and offer more support programs. Yet as we continue to evolve, one thing will remain the same - the Zebra Child Protection Centre will continue to lend unwavering support children who have experienced abuse.

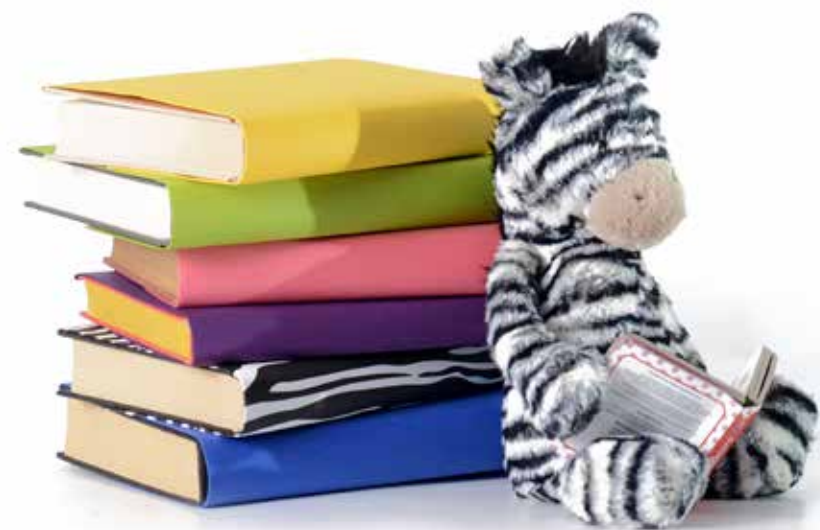
Everything we do at the Zebra Child Protection Centre is to improve the life experiences of children who have suffered abuse, but we couldn't continue to advocate for the rights of children if it wasn't for the support of our community. With the help and resources of our partners, we look forward to working together to achieve our vision of building a community where every child is heard and respected and child abuse is not tolerated.

Along with our Board of Directors, we are proud to lead an organization that makes a profound impact on the life of a child. Thank you for your support in 2015.

**Bob Hassel**  
CEO

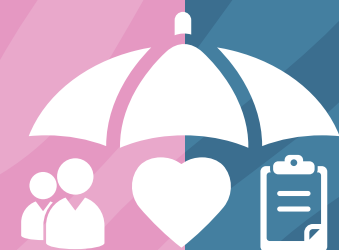
**Grant Fedoruk**  
Board Chair

# Where kids can tell



Every child has a unique story, and it's our job at the Zebra Child Protection Centre to listen. In 2002, our Centre was founded out of a need to create one safe place where victims of child abuse could go to share their stories. As the first Child Advocacy Centre of its kind in Canada, the Zebra Child Protection Centre model was revolutionary – bring together a community of professionals under one roof to support the child throughout the entire reporting, investigative and healing process.

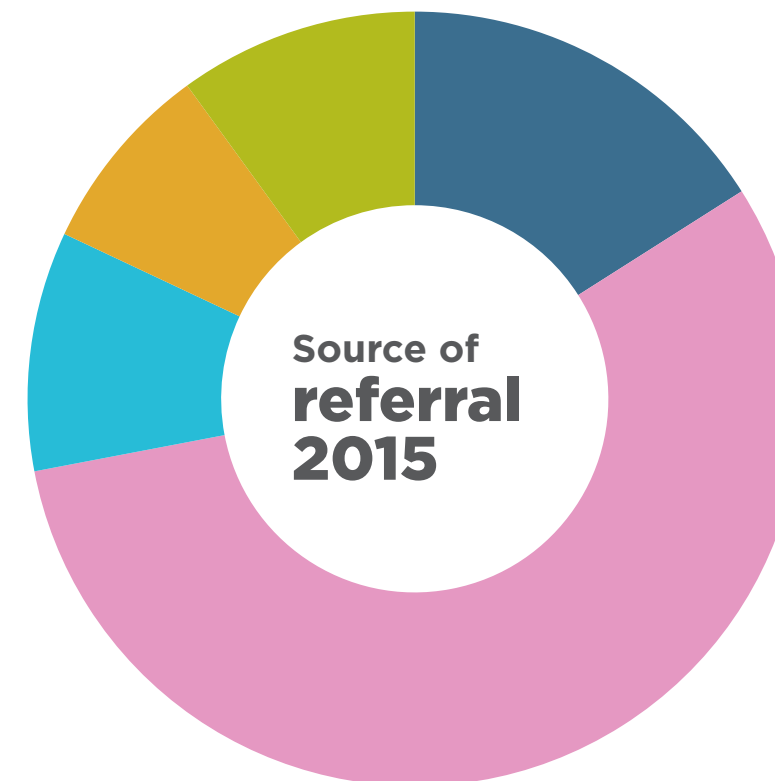
And it worked. Since the Centre's opening in 2002, more than 25 Child Advocacy Centres have opened across Canada and follow a similar model of collaboration, with more opening each year. Although the proof is in the numbers, if these toys could talk they would recount stories of the thousands of children who came through the Centre and found the courage to *tell*.



**Bringing together a community of professionals under one roof to support the child throughout the entire reporting, investigative and healing process.**

# Mission

We aim to provide a collaborative response to child abuse through intervention, advocacy and a continuum of support in a child-friendly environment.

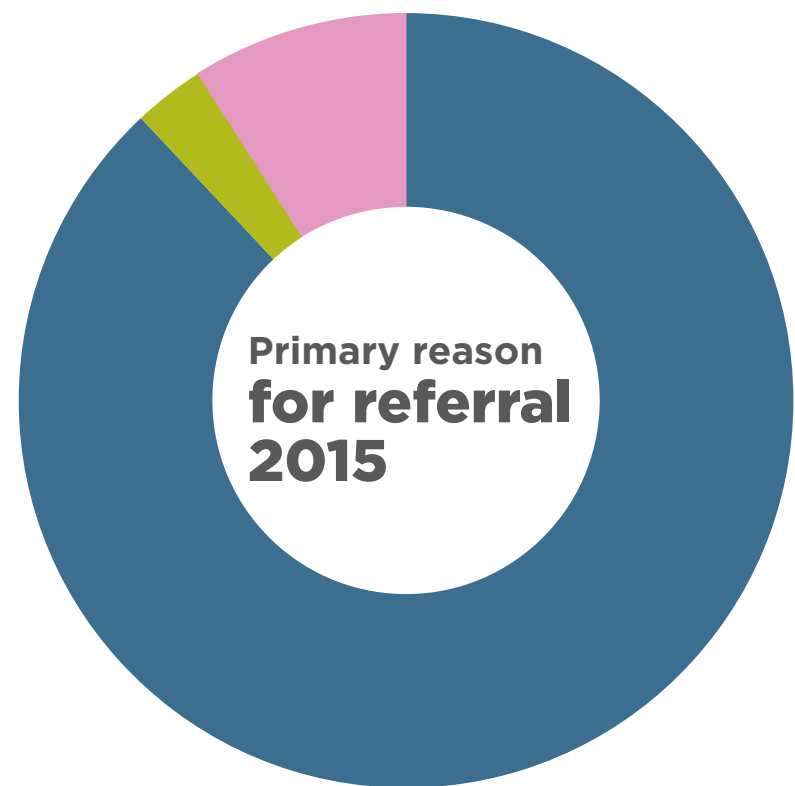


EPS (Patrol)	<b>56%</b>
RCMP	<b>16%</b>
EPS (CARRT)	<b>10%</b>
Edmonton Region Child & Family Services	<b>8%</b>
Other	<b>10%*</b>

\*Includes other policing agencies (i.e. Calgary Police Service, Internet Child Exploitation) and medical and mental health screening professionals.

# Vision

To build a community where every child is heard and respected and child abuse is not tolerated. The Zebra Child Protection Centre will be recognized as the leader in child advocacy.



Sexual abuse	<b>88%</b>
Child witness to criminal act	<b>9%</b>
Extreme physical abuse	<b>3%</b>

*\*These do not occur in isolation. Children who come to the Zebra Centre often experience more than one type of abuse.*



**1,314** children and youth were supported in 2015 - that's an average of 110 per month.

**11,366** support contacts were made in 2015.

Less than one year	<b>&gt;1%</b>
1-3 years	<b>4%</b>
4-7 years	<b>25%</b>
8-11 years	<b>21%</b>
12-15 years	<b>16%</b>
16-17	<b>24%</b>
17 and older	<b>9%*</b>

*\*The Zebra Child Protection Centre supports older youth who may have served as a witness to a file and youth and adults with delayed cognitive functioning.*

## Making a measurable difference

Prior to the Zebra Child Protection Centre's opening in 2002, conviction rates for offenders were less than 20%. Now, our yearly conviction rates have jumped to an average of **65%**.

“

**“Zebra Centre, you have made me STRONG.”**

- Zebra Child

**“I wish there were Zebra Centres all over the world. Thank you for making this very ugly time in our lives seem bearable.”**

- Zebra Child

**“What started out as the most tragic experience, somehow by the efforts of the Zebra Centre and the police, we were able to pull together as a family and accept the support that was offered. My daughter will leave here smiling and to me that is amazing!”**

- Zebra Parent

”



## We're all here to help

Over the last 14 years, we've built a community of professionals who work towards the common goals of supporting victims of child abuse and ending the cycle of violence towards children. Formed on a multidisciplinary model, the Zebra Child Protection Centre's success relies on the collaboration of expertise brought to us by our partner agencies.

7

Number of organizations collaborating as part of the multidisciplinary team

40+

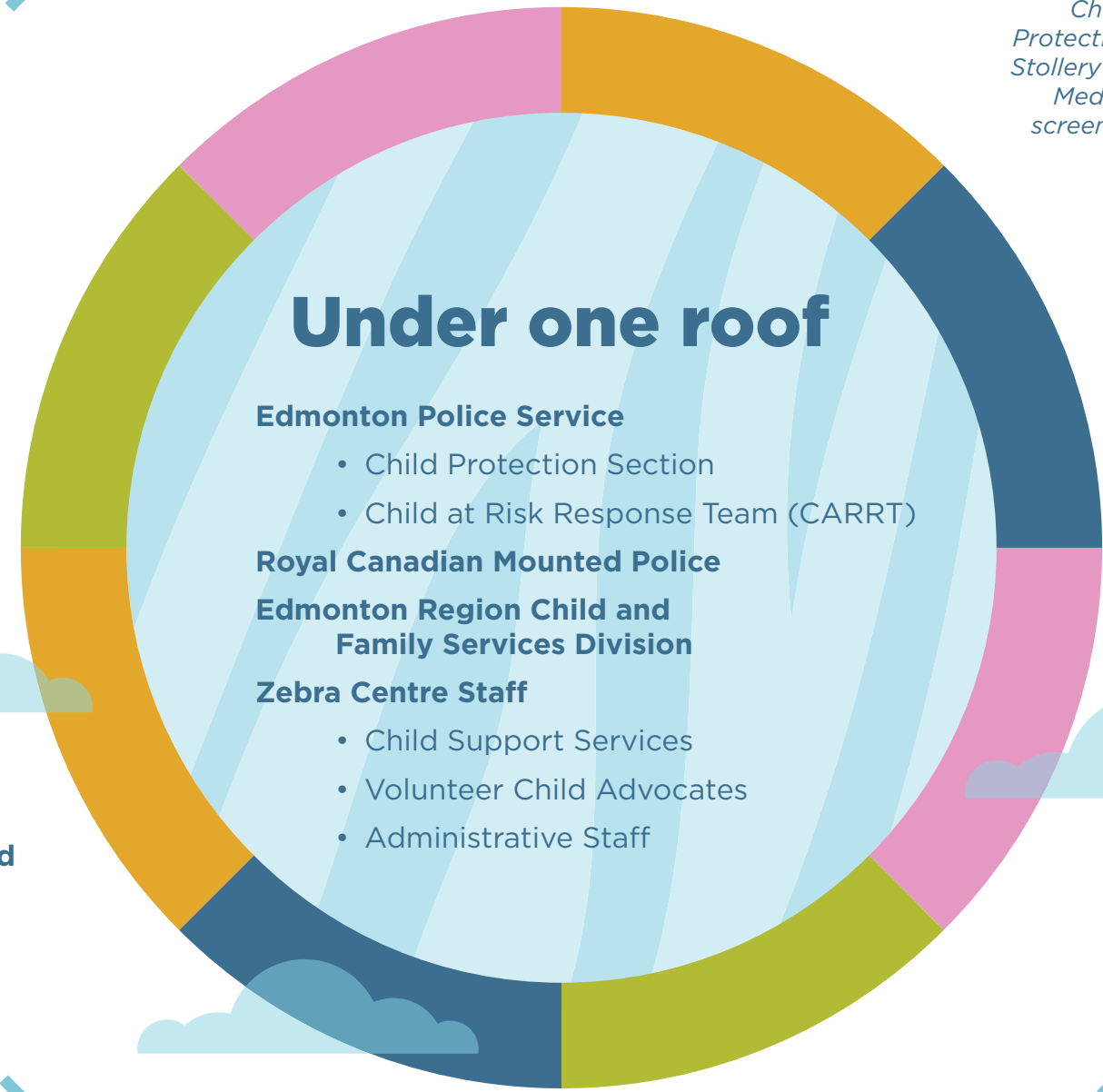
Number of professionals collaborating under one roof

100+

Number of organizations collaborating throughout Alberta

# Throughout Alberta

Integrated and rural police organizations

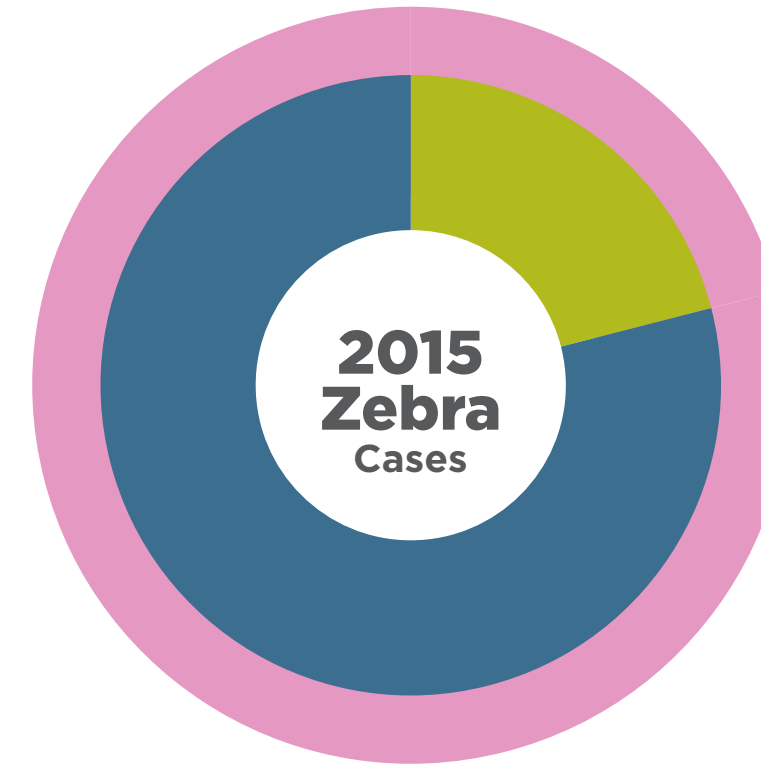


**Alberta Health**  
*Child Adolescent Protection Centre (CAPC), Stollery Children's Hospital  
 Medical and trauma screening professionals*

**Alberta Human Services**

**Alberta Education**

**Alberta Justice and Solicitor General**  
*Alberta Crown Prosecution Service*



Cases from Edmonton	<b>79%</b>
Cases from outside Edmonton	<b>21%</b>
Cases supported collaboratively by two or more partners	<b>100%</b>

Although we operate in the city of Edmonton, we support children beyond our city limits. In 2014, we welcomed the **Royal Canadian Mounted Police** to the Centre. This integration allows us to better serve communities outside of the Capital Region.



**“The Zebra Child Protection Centre is one of our community’s greatest assets. The integrated model of collaboration at the Centre sets the bar and has been replicated within other Child Advocacy Centres across the country. The focus of our work is to achieve the best possible outcomes for the child and the support networks and programs in place at the Centre allow our officers to conduct thorough investigations.”**

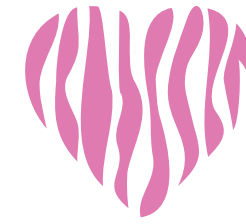
Chief Rod Knecht, Edmonton Police Service

# Surrounding a child with support



Part of what makes the Zebra Child Protection Centre so special is our ability to surround a child and their caregivers with support throughout every stage of the reporting, investigative, judicial and healing process. Like a child's favourite teddy bear, we'll be there every step of the way.

Although not every case will make it to the judicial system, our **Court Preparation Program** ensures that the ones that do are ready for the process. For a child whose only experience with a courtroom has been on television dramas, court can be a pretty intimidating place. Court preparation allows the child to meet with our child advocates and potentially the case's Crown Prosecutor to learn about the rules surrounding court and to dispel any fears the child might have towards the process.



Our support doesn't stop once a verdict is reached or a case is closed. Our **Trauma Referral Program** provides access to the services that help heal. In 2015, we expanded the program to include counseling referrals for non-offending caregivers. Now, everyone is given access to the services that help them heal and grow.



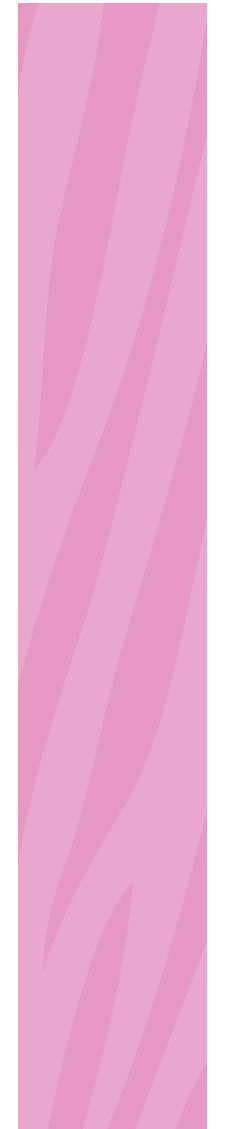
**224**

Court preparation meetings conducted in 2015.



**334**

Trauma referrals made in 2015.



**596%**

Our Trauma Referral Program has increased by 596% in one year!

# A child's best ally



“While I was upset, I cuddled with the dog and felt better right away. I think there should be a support dog for every person, boy or girl, who is going through anything rough. There is no one who understands you more than a dog. I cuddled her and she cuddled me back. I got through this and I am so happy to say that.”

Zebra Child

Sometimes a child just needs to feel the support of someone who is looking out for them - we have programs in place for that.

In 2015, we welcomed our third accredited support dog to the team at the Zebra Child Protection Centre. Thanks to the generous donations of the Rotary Club of Edmonton Urban Spirits, Fletcher, a Yellow Lab from Dogs with Wings, joined us in November of 2015. Together, our three accredited support dogs, **Wren**, **Fossey** and **Fletcher** lend support to children within the Centre and at the courthouse.



We couldn't continue to fight for the rights of kids if it wasn't for a force of child advocate, event and administrative volunteers. Armed with skills-based training, an understanding of how the criminal justice system works and the ability to put a child at ease, our volunteers fill a critical role within the Centre.



224 Meet and greets conducted by Wren, Fossey and Fletcher at the Zebra Child Protection Centre in 2015



208 Forensic interviews conducted with the support of Wren, Fossey and Fletcher in 2015



19 Times Wren, Fossey and Fletcher supported a child on the stand in Provincial Court and Court of Queen's Bench in 2015



15 Court preparations conducted with the support of Wren, Fossey and Fletcher in 2015

224

Court preparations facilitated by our volunteer child advocates in 2015

4,931

Volunteer hours donated to the Zebra Child Protection Centre in 2015.



# Creating a brighter future

Part of our vision at the Zebra Child Protection Centre is to create a future where child abuse is not tolerated.

In 2015, the Zebra Child Protection Centre created a full-time community education and engagement position. Tasked with engaging community members to become leaders in the fight against child abuse, our goal is to spark a conversation around child abuse to gain perspectives from diverse populations. By increasing awareness, prevention and reporting of child abuse amongst cultural and social minorities, the Zebra Child Protection Centre aims to create a safe and inclusive space where all victims of child abuse can feel safe to tell their story.

In consultation with our community, in 2015 we formed the **Cultural Competency Committee** which brings together members from cultural and social minorities to talk openly about child abuse within their populations.



**Cultural stakeholders represented on the Cultural Competency Committee**



**Community presentations and tours of the Centre given in 2015**

## 2015 Board of Directors

**Chair:** Grant Fedoruk  
**Vice Chair:** Lillian Miedzinski  
**Treasurer:** Allison McCollum  
**Treasurer:** Todd Peterson  
**Secretary:** Mary Michailides  
**Director:** Corinne Saad  
**Director:** Dawn Newton  
**Director:** Michelle Doyle, Q.C.  
**Director:** Sandra Skar  
**Director:** Tami Horn  
**EPS:** Supt. Mark Neufeld  
**CEO:** Bob Hassel

# Children have a voice on our board

Great things can happen when a group of likeminded individuals speak up for the best interest of a child. That's how we would describe the work of our volunteer Board of Directors.



# Building a network of support

Our donors and community partners are at the foundation of our success. **THANK YOU** to everyone who contributed to the Zebra Child Protection Centre in 2015.

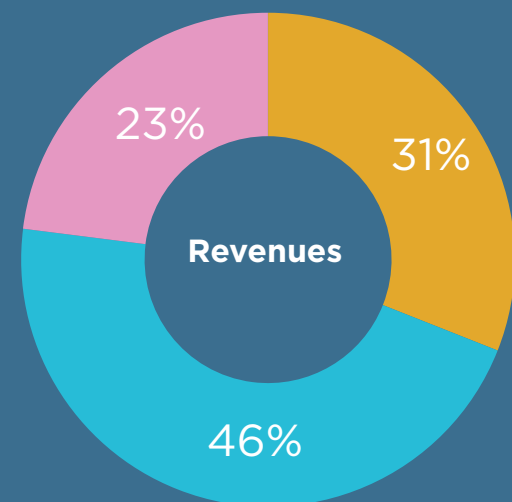
For a full list of donors, please visit [zebracentre.ca](http://zebracentre.ca)



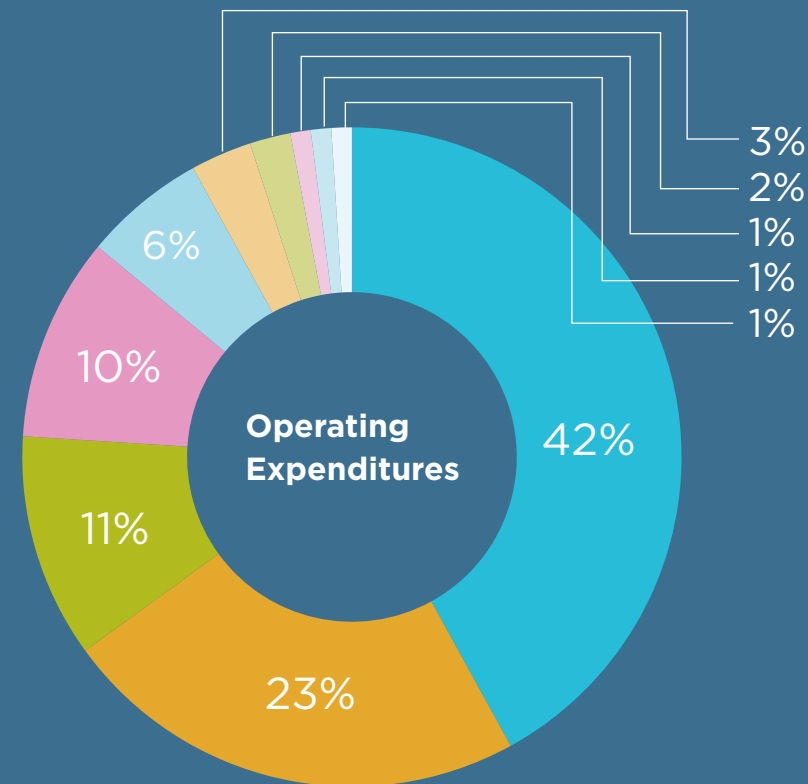
“Northlands is pleased to support the vision and mission of the Zebra Child Protection Centre. Northlands staff and volunteers are privileged to assist the Centre’s efforts to increase the quality of life for abused children by supporting the events and services the society provides.”

Northlands

# Financials



Partner Contributions	\$318,909.12
Grants	\$435,542.37
Donations	\$641,941.41
<b>Total</b>	<b>\$1,396,392.90</b>



Salaries And Benefits	\$574,180.49
Occupancy Costs	\$318,909.12
Children And Family Support	\$150,171.26
Fundraising	\$133,273.53
Office And It Support	\$73,874.09
Professional Development	\$41,373.17
Advertising And Communication	\$27,782.31
Very Important Paws (VIP) Program	\$18,619.98
Other	\$17,839.09
Volunteer Management	\$11,439.17
<b>Total</b>	<b>\$1,367,462.21</b>

“The owners and employees of TAHK Projects Ltd. are proud to support the not-for-profit organizations that directly impact our community. The Zebra Child Protection Centre has been and continues to be our first choice to direct our fundraising efforts to assist in helping the kids in any way we can.”

TAHK Projects Ltd.

## Zebra Child Protection Centre Society Statement Of Financial Position As at Dec 31

	2015	2014
<b>ASSETS</b>		
<u>Current Assets</u>		
Cash	1,101,570	522,888
Short-term Investments	15,263	534,494
Accounts Receivable	6,521	48,736
Prepaid Expenses	3,811	521
	1,127,165	1,106,639
<u>Capital Assets</u>	311,436	272,718
	<b>1,438,600</b>	<b>1,379,357</b>
<b>LIABILITIES AND NET ASSETS</b>		
<u>Current</u>		
Accounts Payable and Accrued Liabilities	95,173	61,771
Deferred Program Specific Contributions*	569,154	454,954
Deferred Contributions - Casino	-	40,413
	664,327	557,138
Deferred Contributions Capital	265,303	265,303
	<b>929,630</b>	<b>822,441</b>
<b>NET ASSETS</b>		
Unrestricted Net Assets	363,455	412,885
Internally Restricted	136,616	136,616
Invested in Capital Assets	8,899	7,415
	508,970	556,916
	<b>1,438,600</b>	<b>1,379,357</b>

\* Doesn't include Casino Funds as reflected on our Balance Sheet - 2015 Financial Position is unaudited.

For a complete copy of audited financial statements, please contact the Zebra Child Protection Centre

**Zebra Child Protection Centre**  
Suite 720, 10909 Jasper Avenue  
Edmonton, AB, T5J 3L9  
780-421-2385

**zebracentre.ca**

**#kidscantell**



**To Report Abuse**

**Edmonton Police Service**  
780-423-4567

**Child Abuse Hotline**  
1-800-387-5437

[www.edmontonandareacfsa.gov.ab.ca](http://www.edmontonandareacfsa.gov.ab.ca)